

# Star in a Star Quilted Wall Hanging

By **Kimberly Einmo**

Featuring the *Easy Star and Geese Ruler*

Quilt Size: 27½" x 27½" / Beginner – Intermediate

Make this lovely one-block-wonder in an afternoon from start to finish! This is the perfect project for beginners or for quilters with more advanced skills who need a gift in a hurry! This is also a great opportunity to perfect your ¼" seam and practice free motion quilting skills.



## Supplies needed:

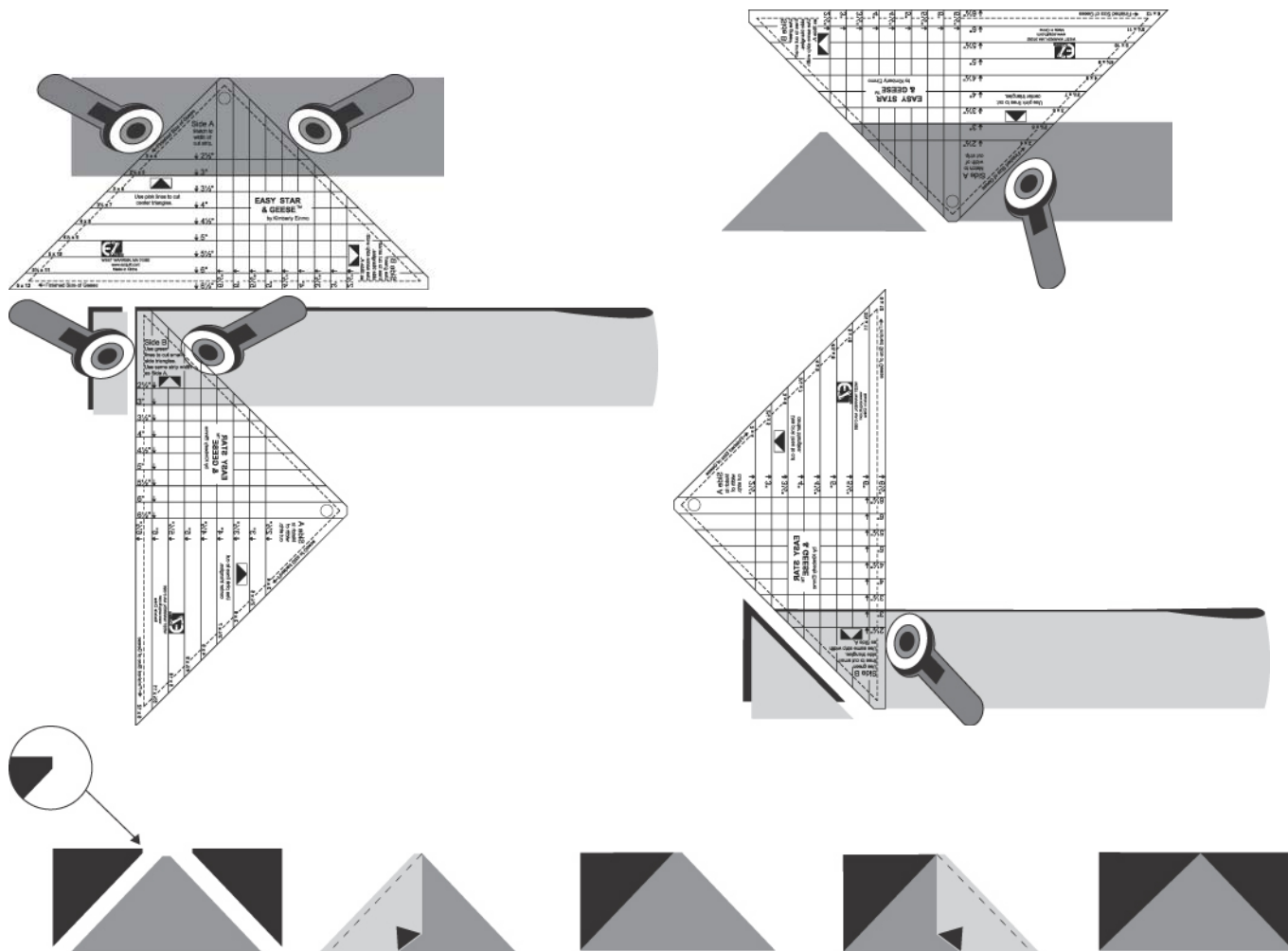
- ✓ Easy Star and Geese Ruler
- ✓ 6" x 24" Ruler
- ✓ Rotary cutter and mat
- ✓ Janome Sewing Machine
- ✓ ¼" quilting foot with guide
- ✓ Free motion quilting foot

| FABRIC                                   | YARDS                  | CUTTING INSTRUCTIONS  |
|--|------------------------|---|
| <b>Fabric #1</b><br>Center Star (Medium) | ¼ yd. or 1 fat quarter | <ul style="list-style-type: none"> <li>• Cut 1 – 5½" square</li> <li>• Cut 1 – 3" strip; use Side B to cut 4 triangle pairs (WINGS)</li> </ul>  |
| <b>Fabric #2</b><br>Outer Star (Dark)    | ¼ yd. or 1 fat quarter | <ul style="list-style-type: none"> <li>• Cut 1 – 3" strip; subcut 4 – 3" squares, use Side A to cut 4 triangles units (GEESE)</li> <li>• Cut 1 – 5½" strip; use Side B to cut 4 triangle pairs (WINGS)</li> </ul> |
| <b>Fabric #3</b><br>Background (Light)   | 1/3 yd.                | <ul style="list-style-type: none"> <li>• Cut 2 – 5½" strips; subcut 4 – 5½" squares, use Side A to cut 4 triangle units (GEESE)</li> </ul>  |
| <b>Fabric #4</b><br>Border (Multi-color) | ½ yd.                  | <ul style="list-style-type: none"> <li>• Cut 3 – 4½" strips; cut 1 strip in half to make 2 – 4½" x 20½" strips for side borders</li> </ul>  |
| <b>Fabric #5</b><br>Binding              | 1/3 yd.                | <ul style="list-style-type: none"> <li>• Cut 3 – 2¼" strips; piece together to make single fold, straight grain binding</li> </ul>  |
| <b>Fabric #6 Medium</b> (Orange)         | 1/8 yd.                | <ul style="list-style-type: none"> <li>• Cut 1 – 3" strip. Cut 4 A geese units.</li> </ul>  |

## Assembly Instructions:

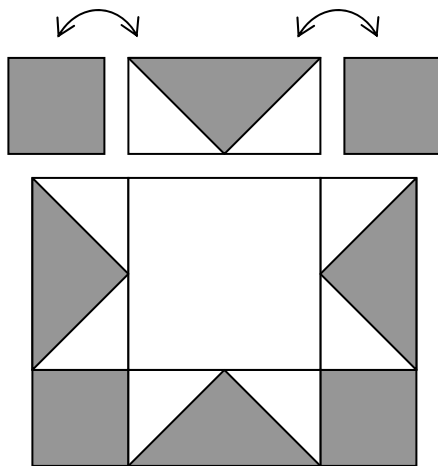
### Step 1

- Sew a small Fabric #1 half-square triangle (wing unit) to a Fabric #2 quarter-square triangle (geese unit) as shown. Match notched edge to notched edge, and pointed edge to pointed edge. Press seam toward wing unit.
- Add mirror image Fabric #1 half-square triangle unit and press seam as shown.
- Units should measure 3" x 5½" unfinished. Make four flying geese units.



### Step 2

- Add Fabric #2 squares to two of the flying geese units. Press seams toward squares.
- Assemble inner Sawtooth Star as shown in diagram.

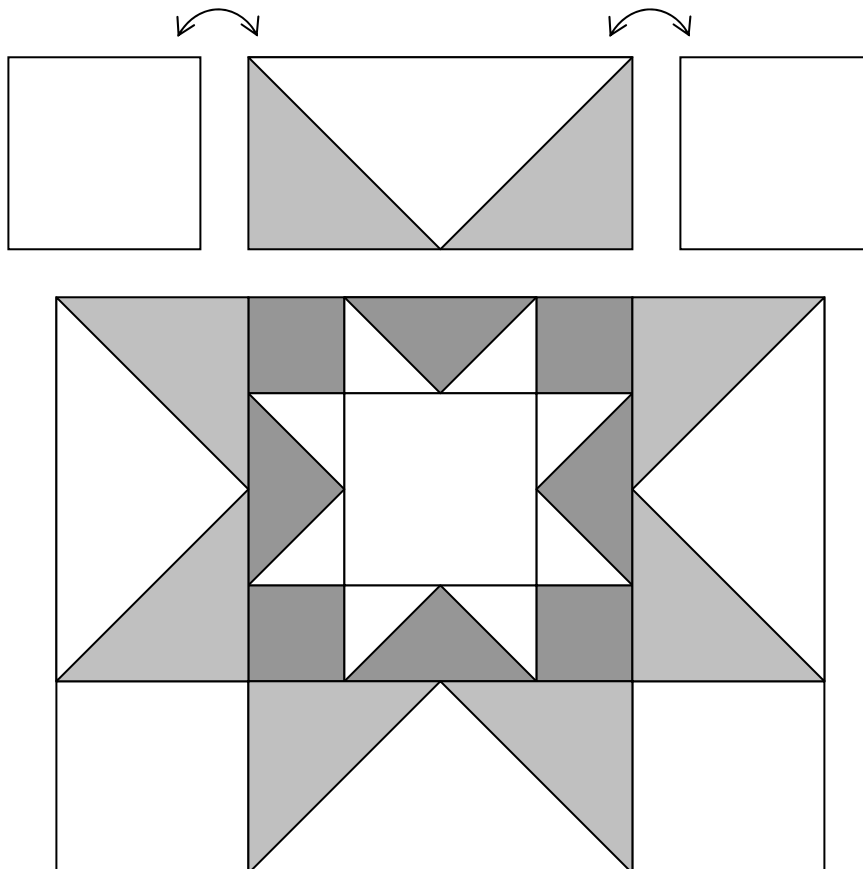


### Step 3

- In same manner, sew large Fabric #2 half-square triangles (wing units) to large Fabric #3 quarter-square triangles. Units should measure 5½" x 10½" unfinished. Make four large flying geese units.

### Step 4

- Add Fabric #3 squares to two of the flying geese units.
- Assemble flying geese units to Sawtooth Star block as shown.



### Step 5

- Add Fabric #4 borders to sides, then add border strips to top and bottom.
- Layer batting, backing, and quilt as desired.
- Embellish and enjoy!